

CAST-X 500 SPECIFICATION

C.A.S. PART NUMBER **WX6E2A300A-WK00-M**

VOLTAGE AND POWER RATINGS	LINE VOLTAGE (V)	TOTAL POWER (W)
	240	1200

RESISTANCE 40.0 - 48.0 OHMS

HIGH LIMIT SWITCH NONE

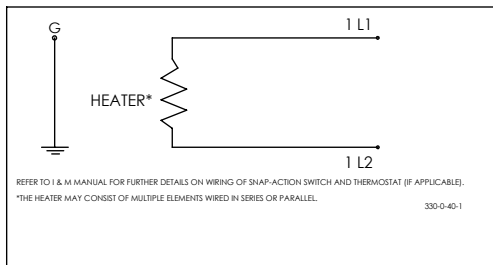
THERMO COUPLE K-TYPE, QTY 1

THERMOSTAT NONE

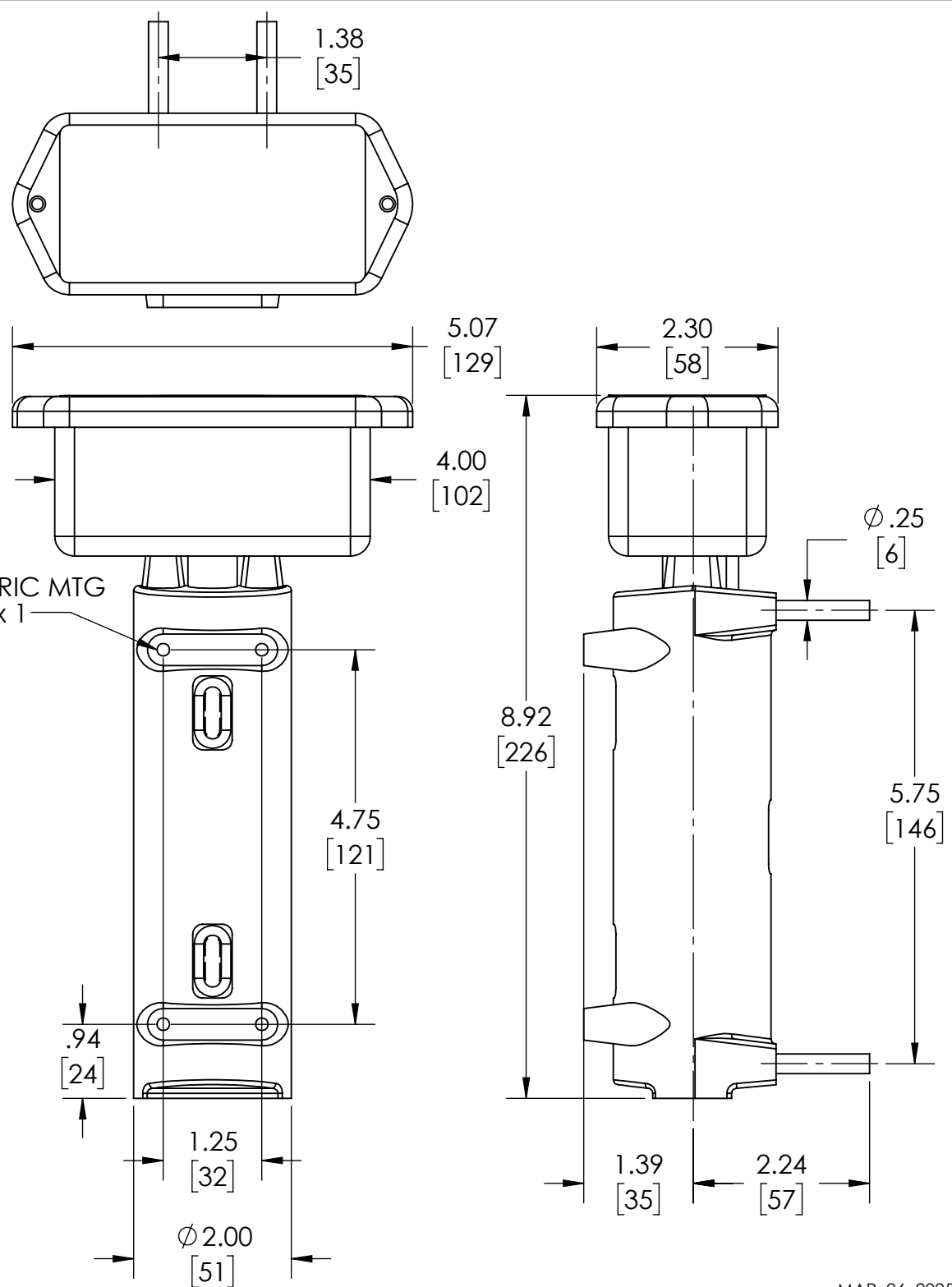
HOUSING CERTIFICATIONS NEMA 4 (WATER PROOF)

TUBING 1/4" OD X 0.035" WALL  
85" OAL, 316 SS

CIRCUIT DIAGRAM



1310 Kingsland Drive, Batavia, IL 60510  
Phone (630) 879-2696  
www.castaluminumsolutions.com



Dimensions are inch [mm] format.