

CAST-X 500 SPECIFICATION

C.A.S. PART NUMBER

HT6E2A300H-EK-M

VOLTAGE AND POWER RATINGS

LINE VOLTAGE (V)
240

TOTAL POWER (W)
1500 MAX

RESISTANCE

32.9 - 38.4 OHMS, 6.25 Amps

HIGH LIMIT SWITCH

NONE

THERMO COUPLE

K-TYPE, QTY 1

THERMOSTAT

NONE

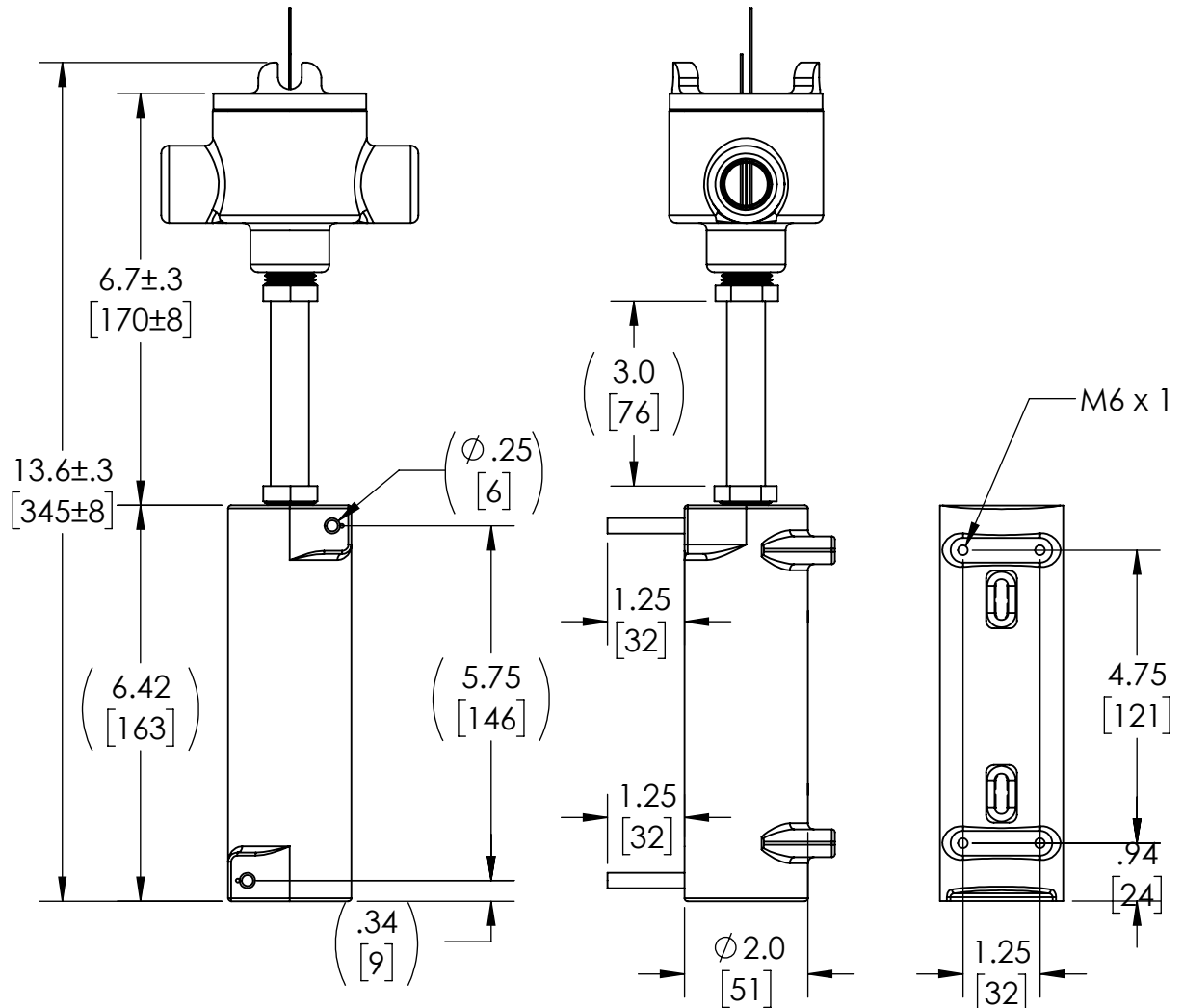
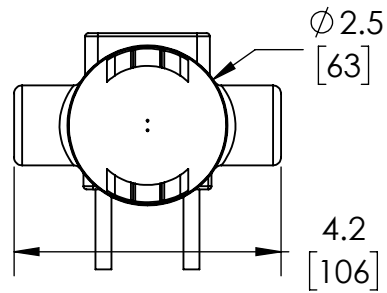
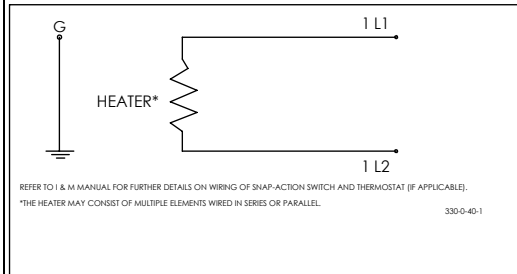
HOUSING CERTIFICATIONS

NEMA 7 (EXPLOSION PROOF)

TUBING

1/4" OD X 0.035" WALL
85" OAL, 316 SS

CIRCUIT DIAGRAM



1310 Kingsland Drive, Batavia, IL 60510
Phone (630) 879-2696
www.castaluminumsolutions.com

Dimensions are inch [mm] format.