

Immersion Heaters



WATROD and FIREBAR Screw Plug Immersion Heaters

Typical Applications

- Water:
 - Deionized
 - Demineralized
 - Clean
 - Potable
 - Process
- Industrial water rinse tanks
- Vapor degreasers
- Hydraulic oil, crude, asphalt
- Lubricating oils at API specified watt densities
- Air and gas flow
- Caustic solutions
- Chemical baths
- Anti-freeze (glycol) solutions
- Paraffin

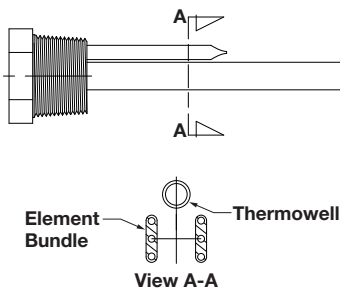
Screw Plug Orientation

Correct element/thermowell orientation assures proper process temperature sensing.

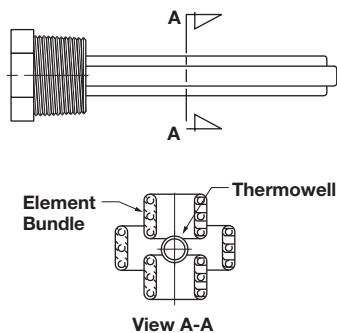
Correct horizontal mounting of WATROD and FIREBAR screw plugs is shown below. Correct orientation assures optimum performance and maximum heater life. Additional mounting information is provided in the *Installation and Maintenance Instructions*.

FIREBAR Heating Elements

1 1/4 in. NPT–One Element

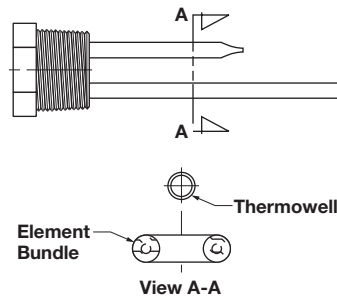


2 1/2 in. NPT–Three Elements

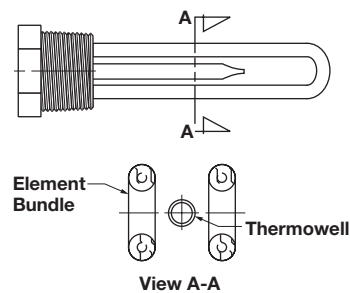


WATROD Heating Element

1 in. NPT–One Element



1 1/4 in. and 2 in. NPT–Two Elements



2 in. and 2 1/2 in. NPT–Three Elements

