

## application note -

Author: Dave Schiltz, Senior Technical Support Specialist

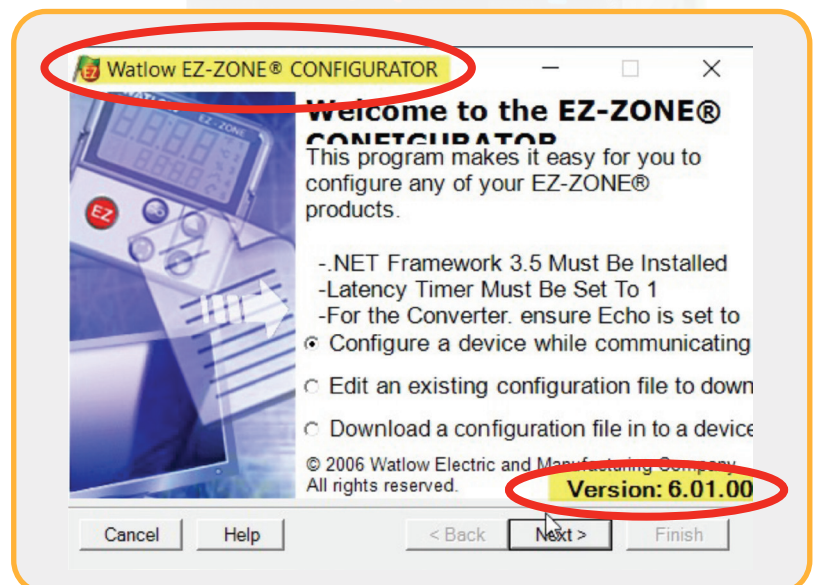


# Converting Existing **EZ-ZONE**<sup>®</sup> PM Configuration Files (.wcf) to **PM PLUS**<sup>®</sup>/ **PM LEGACY**<sup>™</sup> Configuration Files (.wsi)



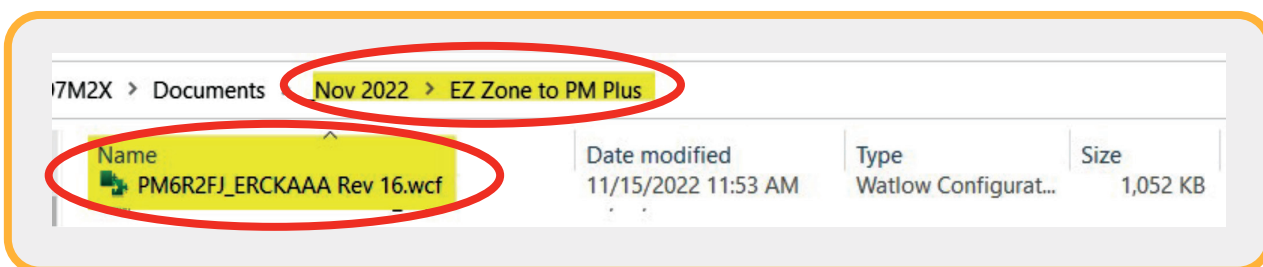
## Steps:

1. Ensure that the .wcf file was created using **EZ-ZONE**<sup>®</sup> configurator version 6.01. (This version is sometimes referred to as 6.1.)

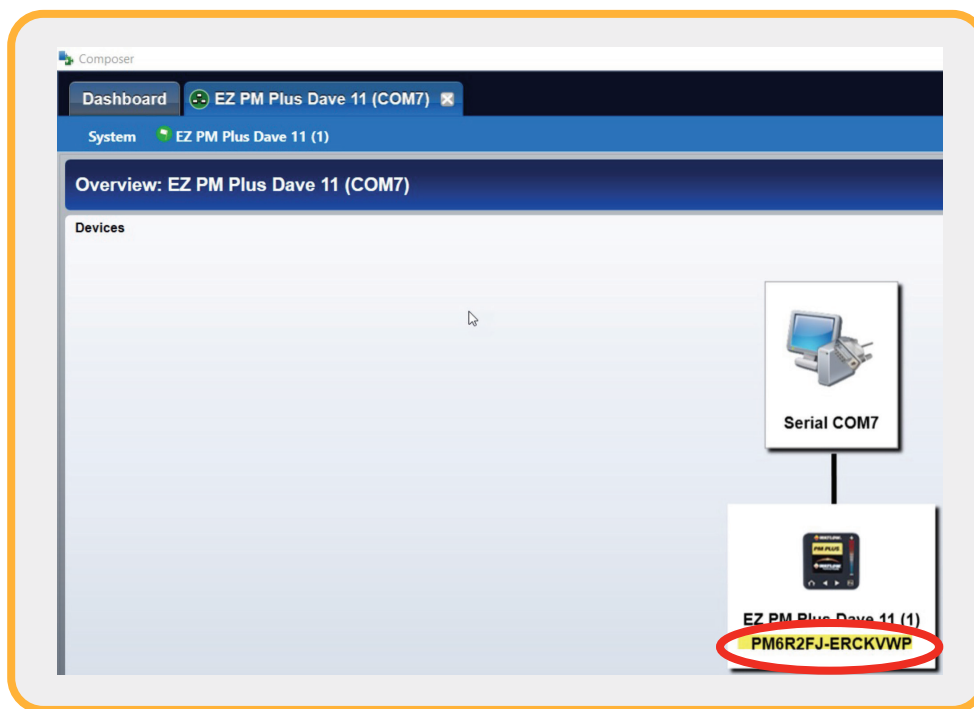


**Steps cont.:**

2. Confirm that the part (#) on the **EZ-ZONE PM** has the same number of inputs and outputs as well as the same type of inputs and outputs as the **PM PLUS**<sup>®</sup>. For example:
  - a. **EZ-ZONE** #: PM6R2FJ-ERCKAAA
  - b. **PM PLUS** #: PM6R2FJ-ERCKVWP
  
3. Access the .wcf file that was created for the **EZ-ZONE PM** with **EZ-ZONE** configurator and save to a known location.

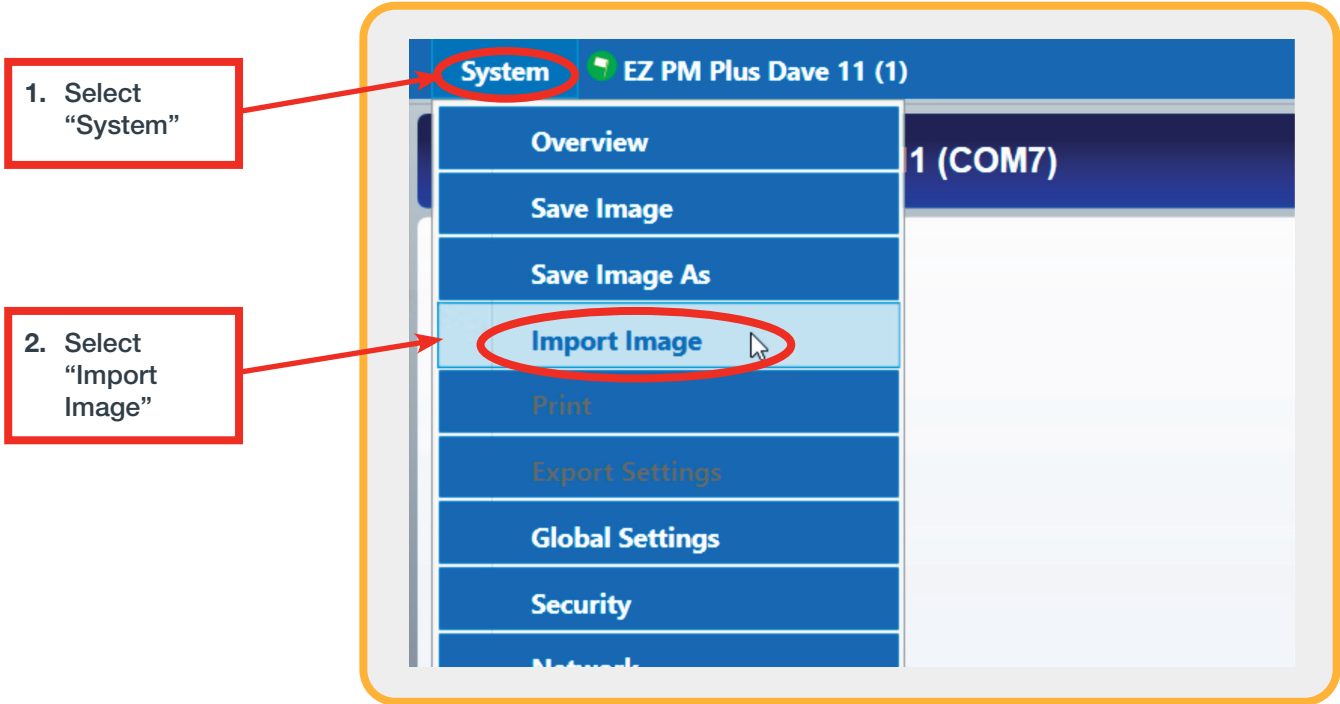


4. Using the current version of **COMPOSER**<sup>®</sup>, connect to a **PM PLUS** via a serial COM connection.

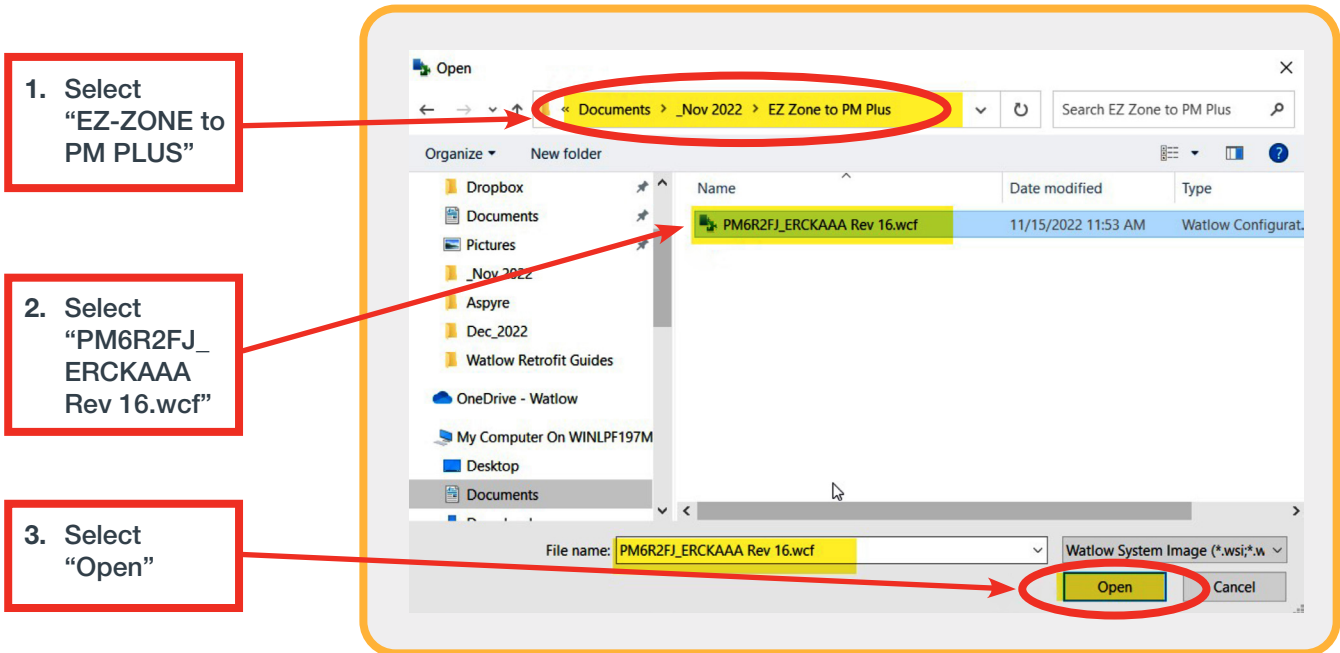


5. To load the .wcf file into the **PM PLUS** from **COMPOSER**:

a.

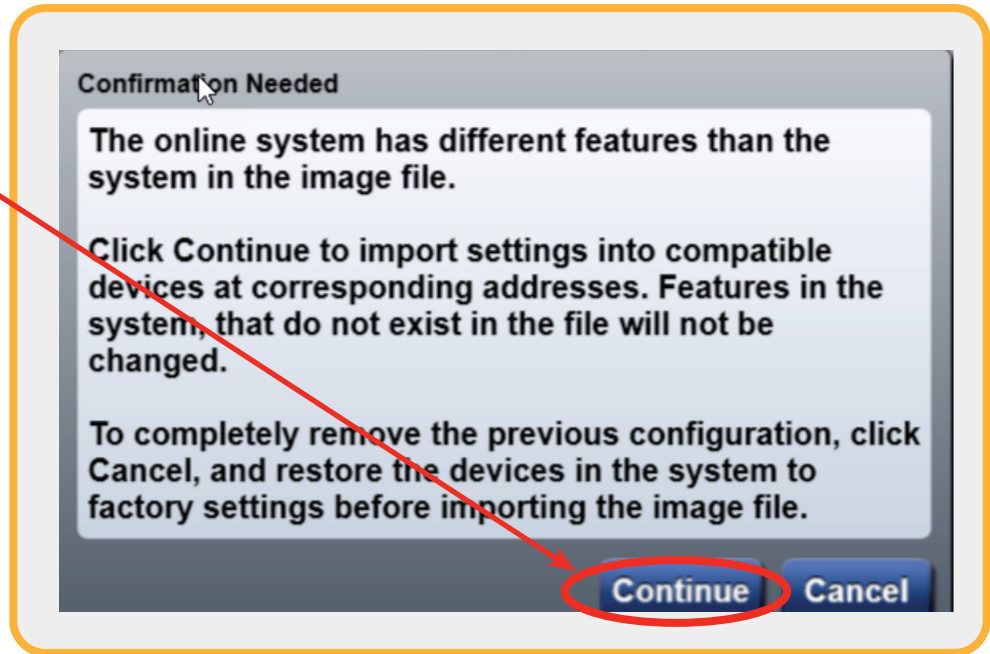


b.



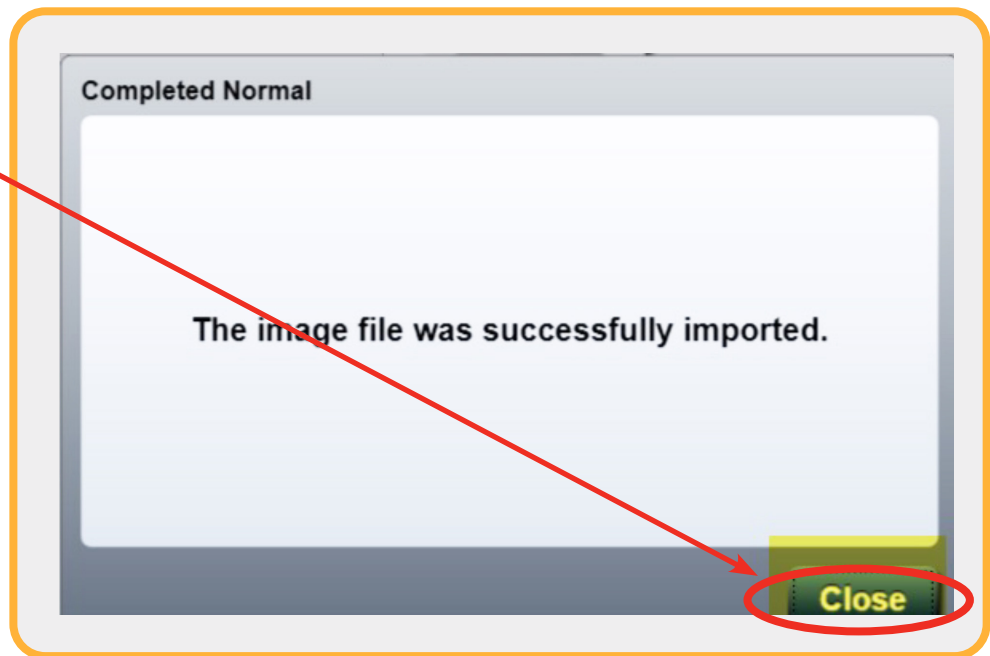
c.

Select  
"Continue"



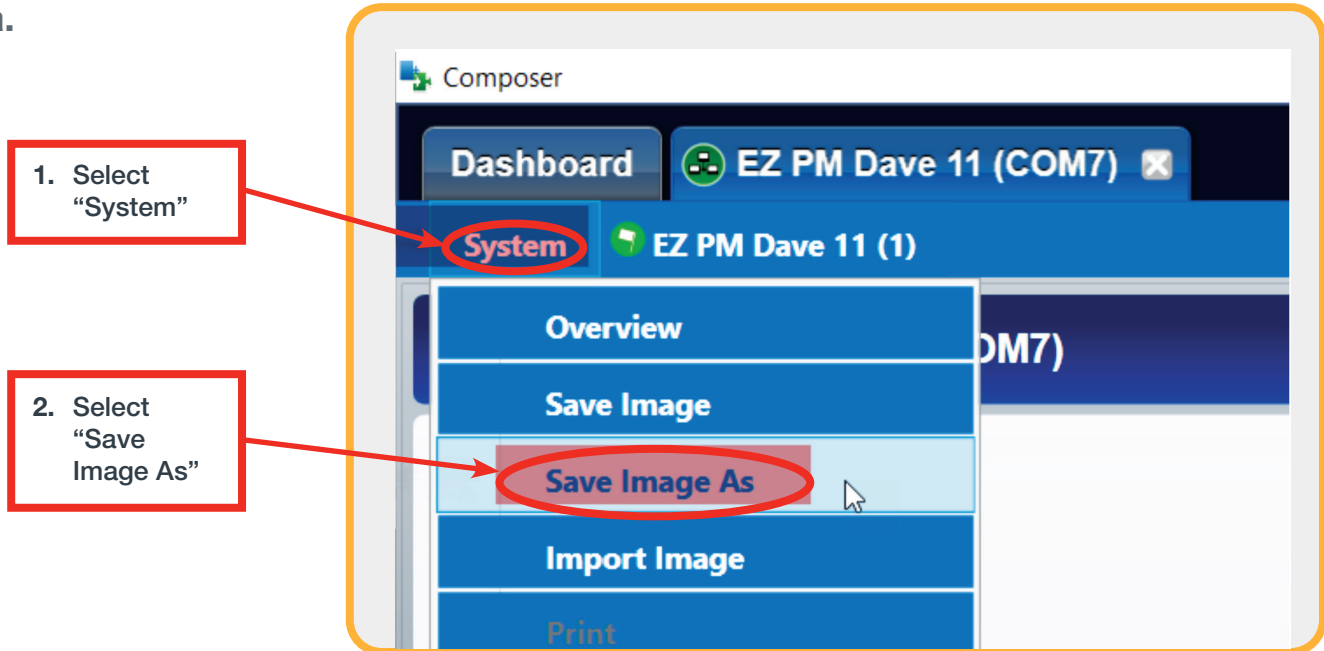
d.

Select "Close"

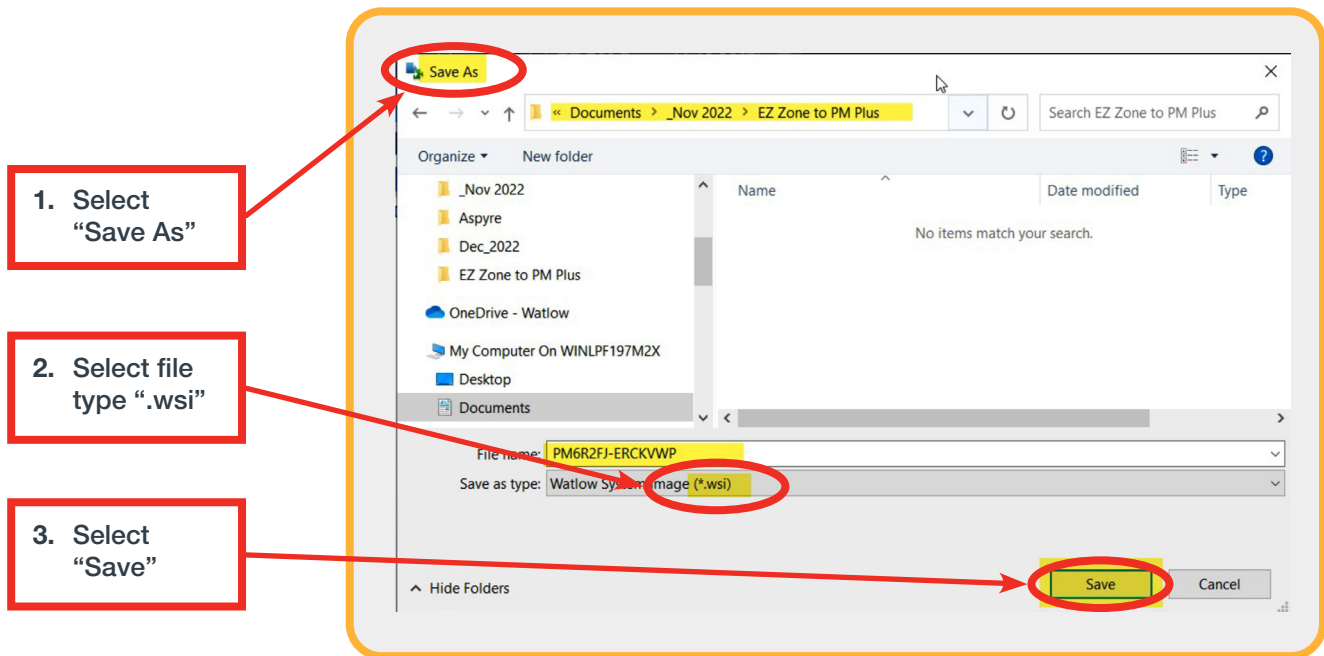


6. Now save this configuration as a .wsi file since this will allow for offline viewing. (The .wcf file will not allow for offline viewing.) The .wsi file is the file type of choice for **COMPOSER**.

a.



b.





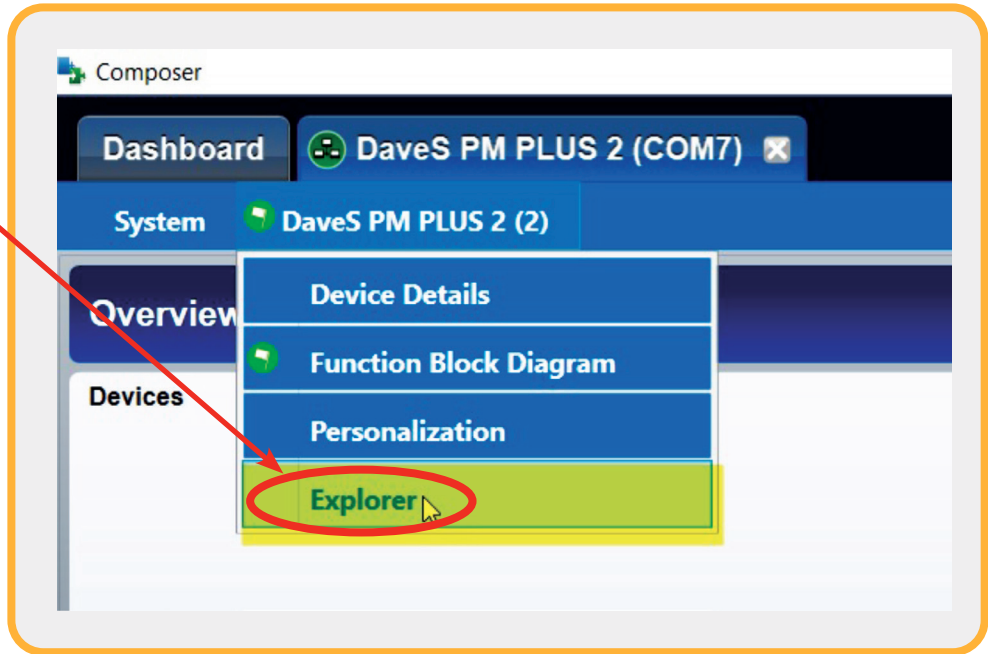
## Additional Notes:

1. To print out the parameter settings on a **PM PLUS**:

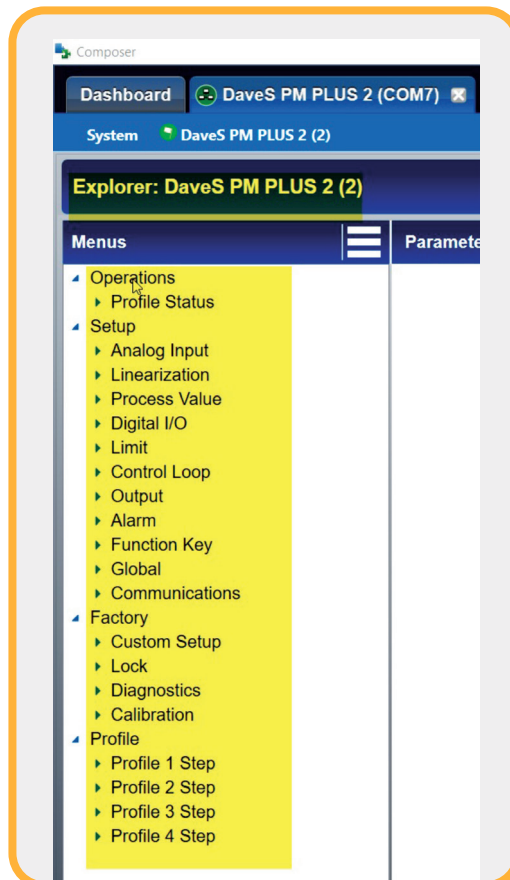
a.

Select  
"Explorer"

By selecting explorer versus the functional block diagram assures that all the parameters will be printed out, since explorer does contain all parameters.



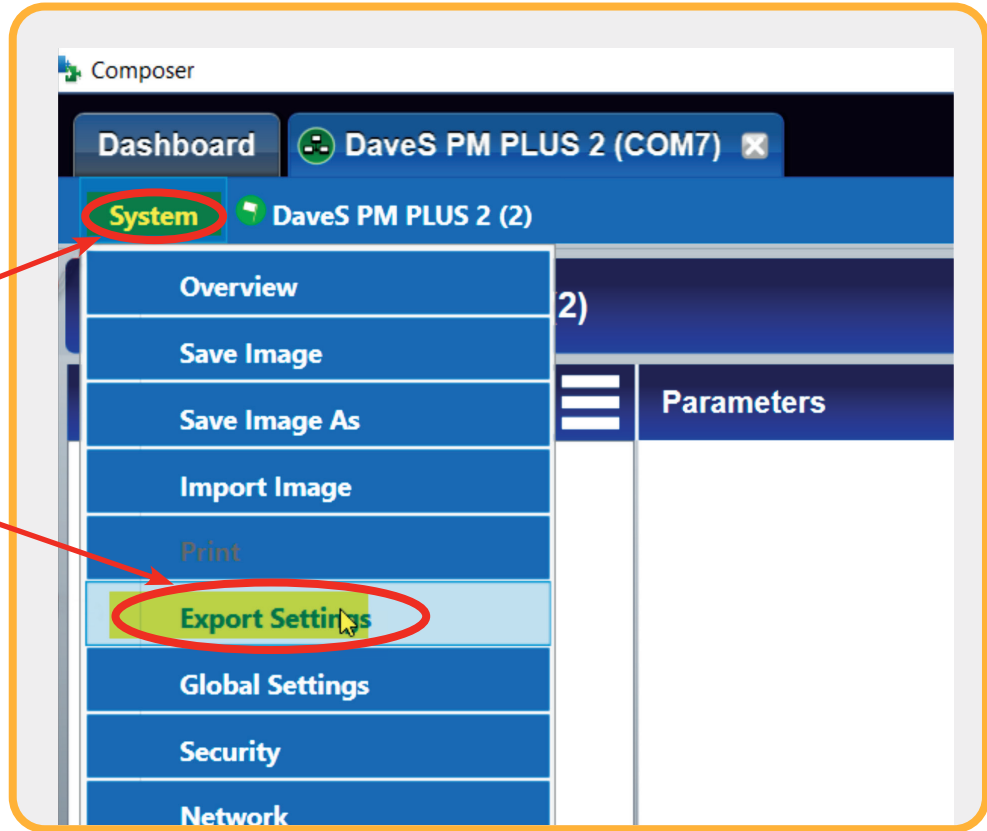
b.



C.

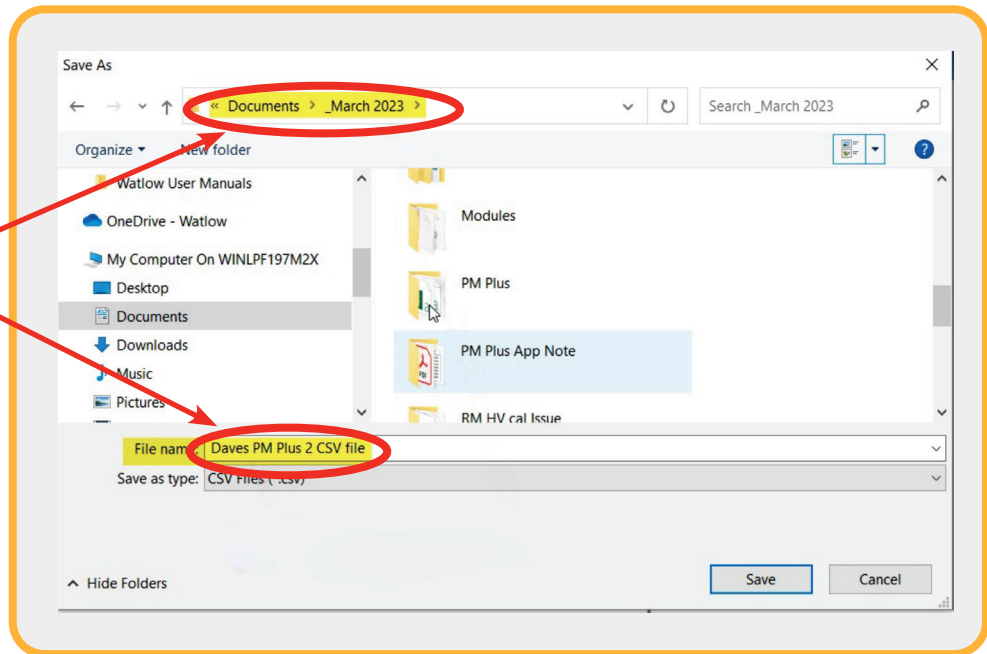
1. Select "System"

2. Select "Export Settings"



d.

Name the CSV file what makes sense to you and save to an acceptable folder



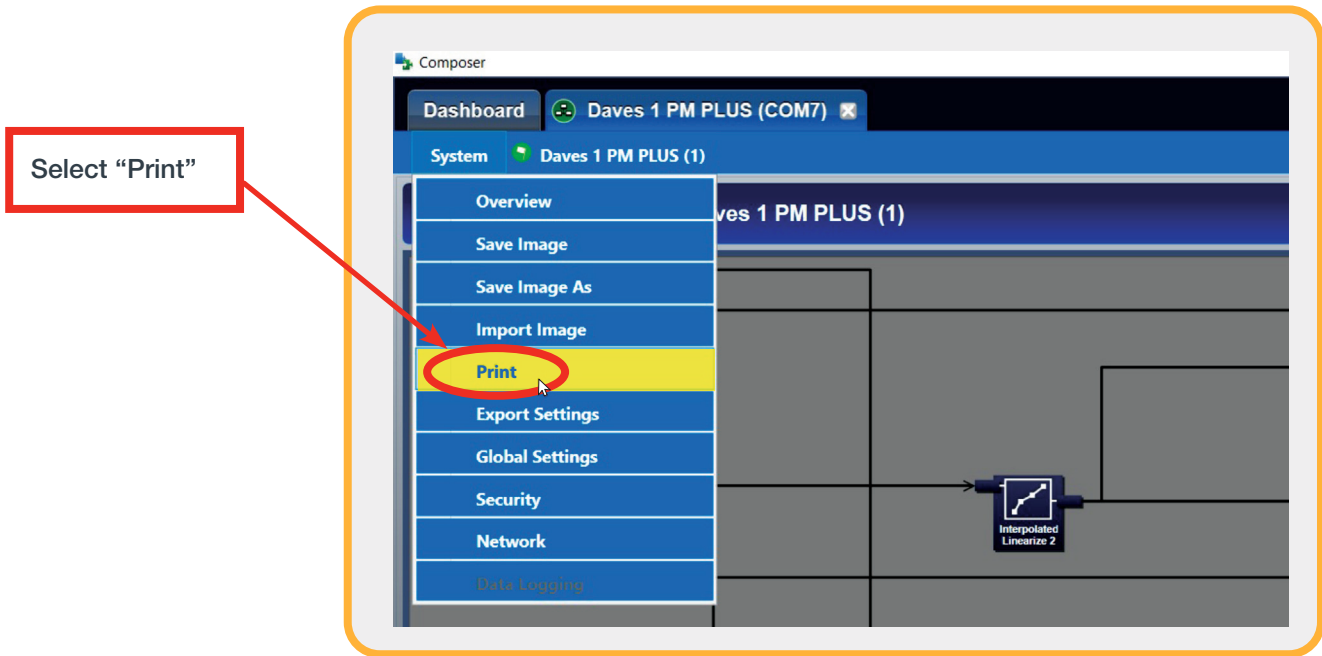
### Additional Notes cont.:

- The CSV file can be opened and viewed with Excel<sup>®</sup>. Then it can be formatted as necessary and printed out.

	A	B	C	D	E	F
1	Device	Page	Menus	Parameter	Settings	Units
2						
3	DaveS PM PLUS 2 (2)	Operations	Profile Status 1	Profile Start		1
4	DaveS PM PLUS 2 (2)	Operations	Profile Status 1	Profile Action Request	None	
5	DaveS PM PLUS 2 (2)	Operations	Profile Status 1	Current Step		0
6	DaveS PM PLUS 2 (2)	Operations	Profile Status 1	Step Type	End	
7	DaveS PM PLUS 2 (2)	Operations	Profile Status 1	Target Set Point Loop		0 F
8	DaveS PM PLUS 2 (2)	Operations	Profile Status 1	Target Set Point Loop		0 F
9	DaveS PM PLUS 2 (2)	Operations	Profile Status 1	Produced Set Point 1		0 F
10	DaveS PM PLUS 2 (2)	Operations	Profile Status 1	Produced Set Point 2		0 F
11	DaveS PM PLUS 2 (2)	Operations	Profile Status 1	Hours		0
12	DaveS PM PLUS 2 (2)	Operations	Profile Status 1	Minutes		0
13	DaveS PM PLUS 2 (2)	Operations	Profile Status 1	Seconds		0
14	DaveS PM PLUS 2 (2)	Operations	Profile Status 1	Event 1	Off	
15	DaveS PM PLUS 2 (2)	Operations	Profile Status 1	Event 2	Off	
16	DaveS PM PLUS 2 (2)	Operations	Profile Status 1	Jump Count Remaining		0
17	DaveS PM PLUS 2 (2)	Setup	Analog Input 1	Sensor Type	Thermocouple	
18	DaveS PM PLUS 2 (2)	Setup	Analog Input 1	TC Linearization	J	
19	DaveS PM PLUS 2 (2)	Setup	Analog Input 1	RTD Leads		2
20	DaveS PM PLUS 2 (2)	Setup	Analog Input 1	Units	Process	
21	DaveS PM PLUS 2 (2)	Setup	Analog Input 1	Scale Low		0
22	DaveS PM PLUS 2 (2)	Setup	Analog Input 1	Scale High		20
23	DaveS PM PLUS 2 (2)	Setup	Analog Input 1	Range Low		0 F
24	DaveS PM PLUS 2 (2)	Setup	Analog Input 1	Range High		9999 F
25	DaveS PM PLUS 2 (2)	Setup	Analog Input 1	Process Error Enable	Off	
26	DaveS PM PLUS 2 (2)	Setup	Analog Input 1	Process Error Low Val		0
27	DaveS PM PLUS 2 (2)	Setup	Analog Input 1	Filter		0.5 Seconds
28	DaveS PM PLUS 2 (2)	Setup	Analog Input 1	Input Error Latching	Off	
29	DaveS PM PLUS 2 (2)	Setup	Analog Input 1	Display Precision	Whole	
30	DaveS PM PLUS 2 (2)	Setup	Analog Input 1	Sensor Backup	Off	
31	DaveS PM PLUS 2 (2)	Setup	Analog Input 1	Calibration Offset		0 F

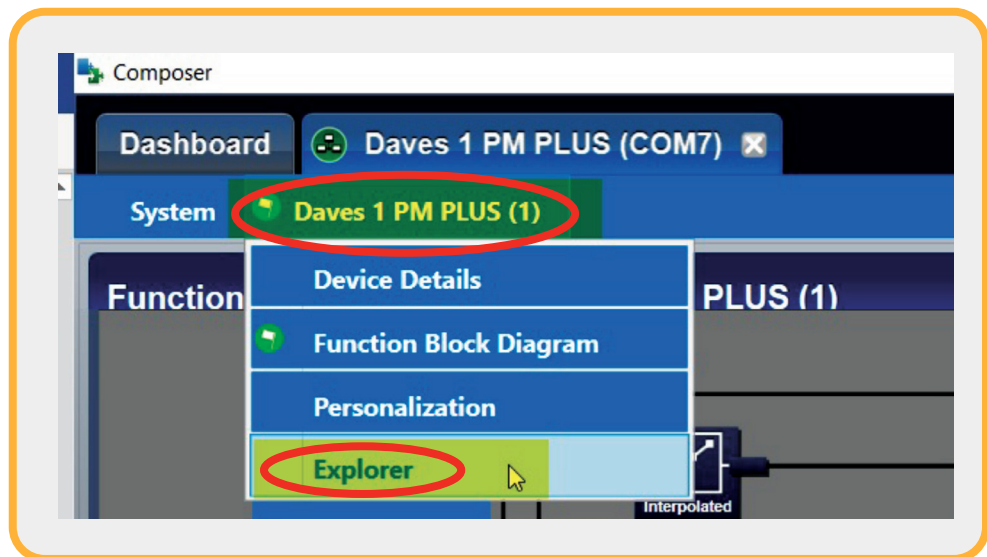


3. The print function prints a view of the function block diagram.



4. If the **PM PLUS** has the profiling option, then program profiles is accomplished via the explorer view.

a.



Additional Notes cont.:

b.

The screenshot displays the WATLOW PM PLUS software interface. At the top, the Explorer menu is titled "Explorer: Daves 1 PM PLUS (1)". Below this, a "Menus" sidebar lists various options, with "Profile" and "Profile 1 Step" highlighted. The main area is titled "Parameters" and contains a configuration table for a step.

Parameter	Value	Unit
Step Type	Time	
Target Set Point Loop 1	50	C
Target Set Point Loop 2	-18	C
Hours	0	
Minutes	1	
Seconds	10	
Rate	0.000	C
Wait for Process Instance	1	
Wait For Process 1 Value	50	C
Wait Event 1	Off	
Wait Event 2	Off	
Jump Step	1	
Jump Count	1	
End Type	User	
Event 1	On	
Event 2	Off	