

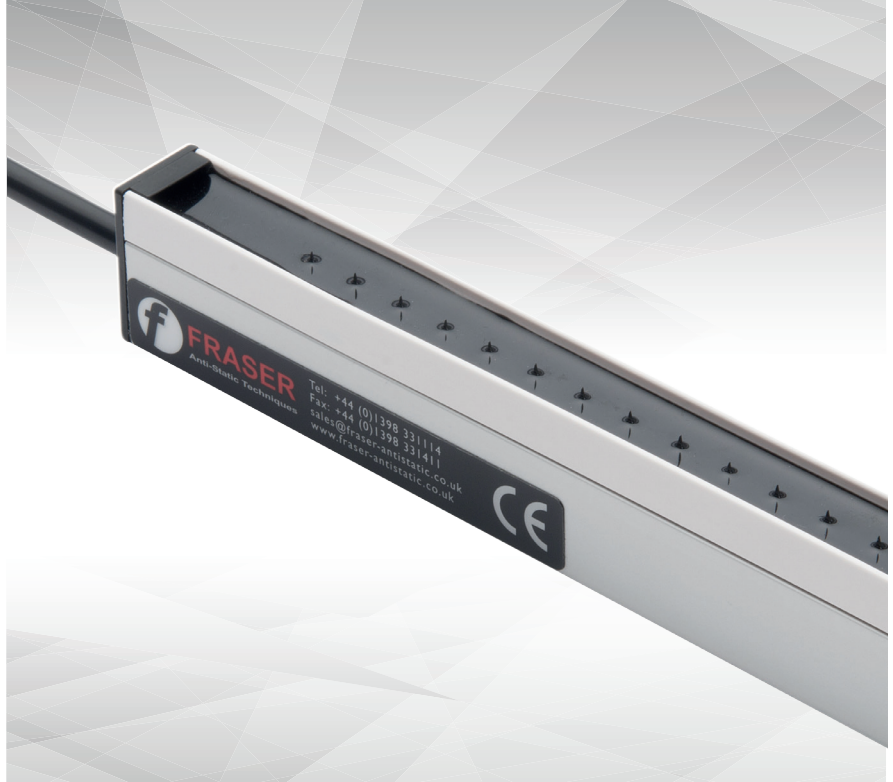
# ANTI-STATIC BARS

## 1250 & 1250-S STATIC ELIMINATORS

Powerful performance and market-leading reliability make the 1250 and 1250-S the first choice static eliminators for manufacturers.

The 1250 and 1250-S neutralise static electricity on sheet, web and similar processes throughout the plastics, packaging, converting and related industries.

- > The modern design gives high performance and completely shockless operation.
- > Stay-sharp etched emitters for better long term performance.
- > Emitters at 10 mm pitch provide the most intense field of static neutralisation.
- > All electronic components are fully encapsulated for maximum reliability.
- > They are suitable for food, medical, pharmaceutical and many cleanroom applications.
- > Robust construction ensures a long life of high performance.
- > Simple to install - with fixed mounting studs (1250) or studs sliding in slot (1250-S).
- > Operating distances of up to 150 mm, best distance 20 - 50 mm.
- > Washable and easy to clean.

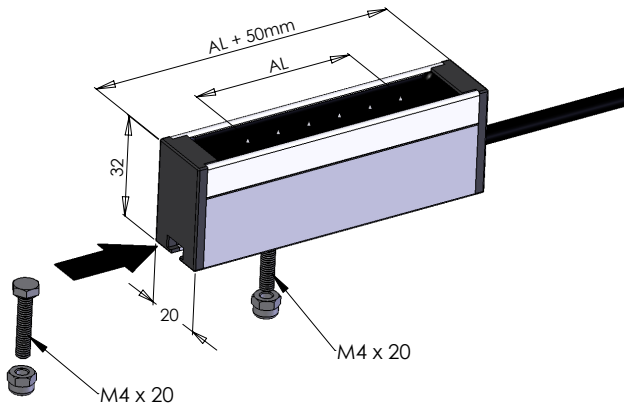


### Specification

<b>Length:</b>	From 60 mm to 6000 mm.
<b>Construction:</b>	Anodised aluminium, epoxy resin, ABS and hardened etched emitters.
<b>Cable:</b>	Hi-Flex 30 kV screened cable with 70 mm bend radius. Standard length is 2 m - longer lengths can be specified at time of order (subject to maximum load on power unit), 90° cable exit option. Bars may also be supplied in series- joined by cable. Also available with detachable cable- see datasheet for Model 1255.
<b>Safety:</b>	5 mA maximum current from Power Unit. High voltage resistance inside bars further limits current below 50 $\mu$ A.
<b>Protection Classification:</b>	IP66. Fully sealed.
<b>Environment:</b>	60° maximum temperature. 70% rH non-condensing max.
<b>Power Units:</b>	Use with Fraser 5.5 kV and 6 kV Power Units. See Datasheets.
<b>Standards:</b>	CE. UL (US and C) Listing is a free of charge option.

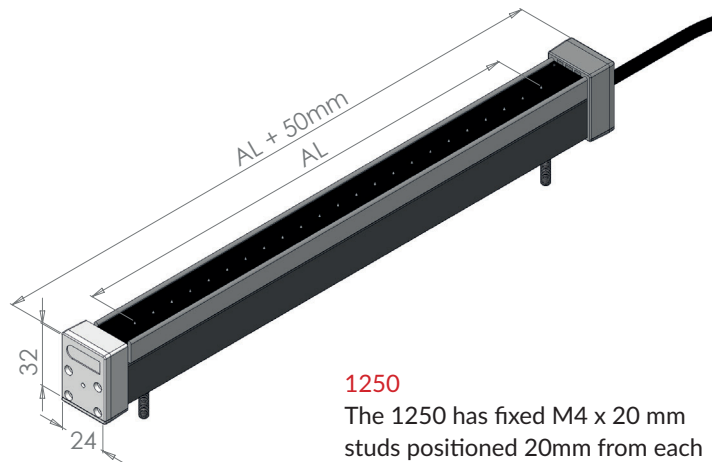
## How it works

The 1250 works by applying high voltage to an emitter in a controlled and safe way. The electric field around the emitters ionises the air - breaking it up into positive and negative ions. These ions neutralise static electricity by being attracted to charges of the opposite polarity. Unused ions quickly dissipate into the atmosphere.



### 1250-S

The 1250-S has M4 x 20 mm hexagon head mounting studs which slide in a groove on the underside of the bar. This gives fast and simple installation.



### 1250

The 1250 has fixed M4 x 20 mm studs positioned 20mm from each end, and in the middle for longer bars.

## Variants

<b>EX - ATEX:</b>	For hazardous areas see EX-1250 datasheet.
<b>Airboost:</b>	For extending the range up to 500mm, see 1250-AB and 1250 Air Datasheets.
<b>Balanced:</b>	For high tech applications where an accurate electrical ion balance is required.
<b>Combination:</b>	A passive static discharger may be combined with a 1250, for speeds over 1000 m/min.
<b>Series:</b>	Bars supplied in series - joined by cable.
<b>Detachable Cable:</b>	See 1255 Datasheet.

ANTI-STATIC BARS - SHORT RANGE

**1250/1250-S (5.5kV-6kV)** Overall length 60mm to 6m. Active length is overall length less 50mm.  
Supplied with 2m cable. Use with HP50 Series.

**1255/1255-Series (5.5kV-6kV)** Overall length 100mm to 6m. Active length is overall length less 80mm.  
Supplied with 2m of detachable cable. Use with HP50 Series.

Length up to (mm)
100
200
300
400
500
600
700
800
900
1000
1100
1200
1300
1400
1500
1600
1700
1800
1900
2000
2100
2200
2300
2400
2500
2600
2700
2800
2900
3000
3100
3200
3300
3400
3500
3600
3700
3800
3900
4000

**1250**  
The 1250 has fixed M4 x 20 mm studs positioned 20mm from each end, and in the middle for longer bars.

**1250-S**  
The 1250-S has M4 x 20 mm hexagon head mounting studs which slide in a groove on the underside of the bar. This gives fast and simple installation.



Important Ordering Information			
Please ensure all orders specify the correct information:			
<b>A</b> Model Number			
<b>B</b> Overall Length (4 digits, in mm)			
<b>C</b> Cable Length (in m)			
<b>D</b> Connection (see pg. 5)			
For example:			
<b>A</b>	<b>B</b>	<b>C</b>	<b>D</b>
1250-S	2480	2.5	HP
Model 1250-S Bar 2480mm long with 2.5m cable and HP Connection			

See next Page for options.



For longer lengths, please contact the Factory.



Anti-Static Bars - Options and Spare Parts

Code	Description
80312	Extra Cable - per m
UL	UL Specification
90° CABLE	90° Cable Exit
EX	ATEX Certified
Series	Bars joined in Series
90100	HP Connection
90101	9055-2 Connection
12508	AC Bar Mounting Set
1250AB	Air Boost Attachment
1250AIR	Air Bar Attachment
1250-50	Balanced Bar +/- 30 V

Notes
Only available for 1250 & 1250-S
Only available for 1250 & 1250-S
Only available for 1250 & 1250-S
For Assembly by Customer
For Assembly by Customer
2x Brackets, M4 Studs, Nuts and Washers
Please contact factory.



HP Connector  
For use with HP50-1, HP50-2,  
HP50- 4 & HP80 Power Units.



9055-2 Connector  
For use with 9055-2 Power Units.