

# Power Series Dimensions

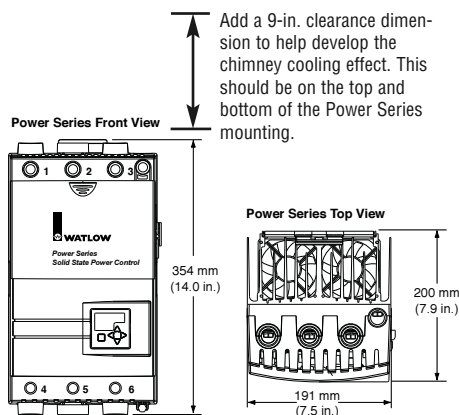


Figure 2.2a — Power Series dimensions.

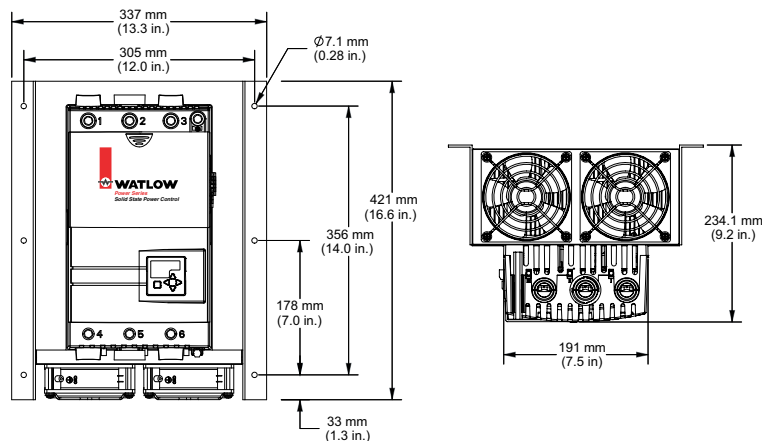


Figure 2.2aa — F35 model only.

## Mounting the Power Series Controller

**NOTE:** The Power Series controller must be mounted vertically. When multiple units are used in one cabinet, it is best that they are mounted side-by-side when possible. If they are mounted one above the other, adequate spacing and airflow must be provided. See Enclosure Guidelines on page 2.3.

**For models N20 through F30:**

1. Determine the panel location for mounting the Power Series controller and punch or drill holes for the 4 mounting screws per the drawing below. The mounting plate can be used as a template.
2. Attach the Power Series mounting plate using 4 screws (customer supplied, #10 screw minimum, 1/4 inch screw maximum).
3. Align the heads of the shoulder screws on the back of the Power Series heat sink with the key slots on the mounting plate. Push the unit in, and then down until it snaps into place. Mounting is complete.

**For F35 models:**

**F35 models are a bolt-down package. Drill and tap six holes per the above drawing for 1/4-inch 20 bolts.**

### Power Series Mounting Plate

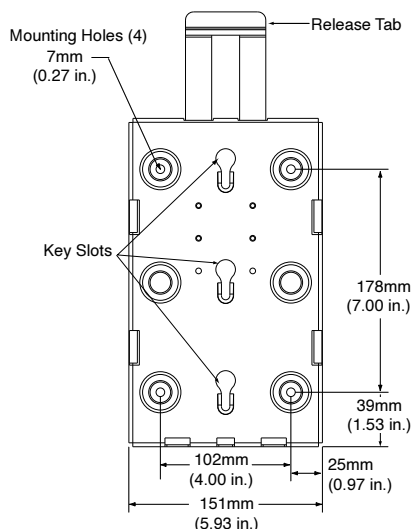


Figure 2.2b — Mounting plate dimensions.

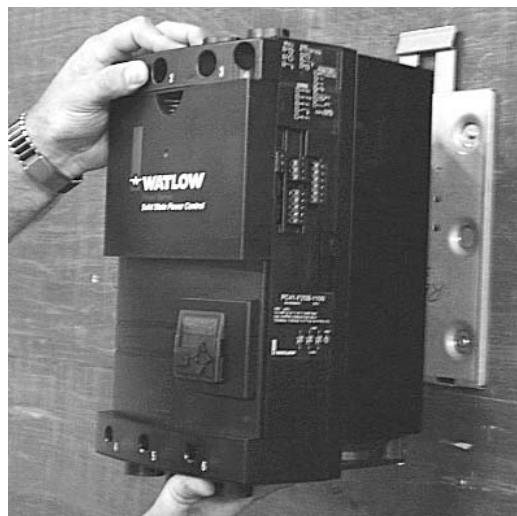


Figure 2.2c — Installing the controller.